

Name & Date:

Objective: IELTS Writing

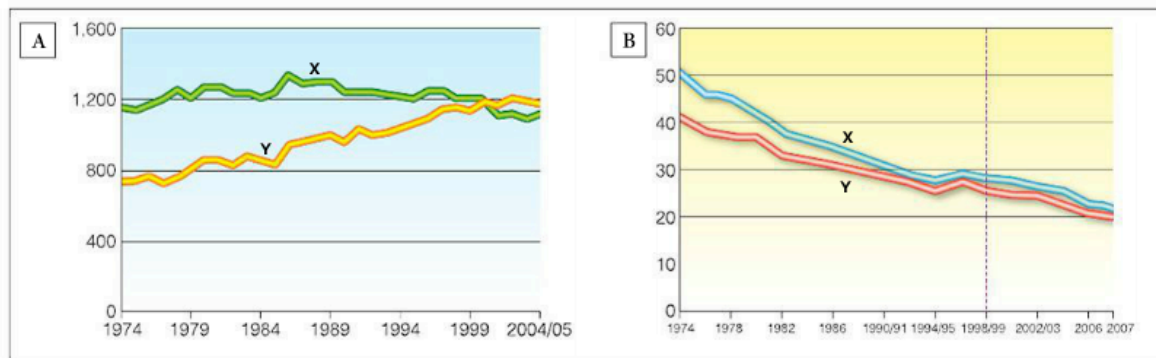
Source: Focus on IELTS – Chapter 2 – Page 19-21

GRAPHS

Graphs A and B below show trends in two activities in Britain.

Task 1

consumption of fruit and vegetables (vegetables v fruit)  
cigarette smoking (male vs female)



Fill in the chart by matching Graphs A and B to the following short paragraphs. Then say which activities you think each graph represents.

- 1 There was a **steady downward trend** in both X and Y **between 1974 and 1994**. Both activities then **levelled out** briefly before continuing to **fall**.
- 2 Activity X **remained fairly steady over the period**, reaching a small **peak** in about 1986. Meanwhile there was an **increase in** Activity Y, which **exceeded** Activity X for the first time in 2000.

| Graph | Paragraph | Activity |
|-------|-----------|----------|
| A     |           |          |
| B     |           |          |

Name & Date:

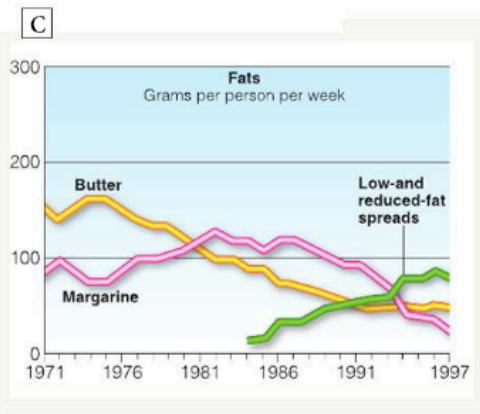
Objective: IELTS Writing

Find another way of saying the following.

- |                         |                      |
|-------------------------|----------------------|
| 1 a very small increase | 4 to rise quickly    |
| 2 from 2000 until 2003  | 5 to reach a maximum |
| 3 a steep decline       | 6 to stop falling    |

|          |  |
|----------|--|
| <b>1</b> |  |
| <b>2</b> |  |
| <b>3</b> |  |
| <b>4</b> |  |
| <b>5</b> |  |
| <b>6</b> |  |

Complete the description of Graph C using terms from the *Useful language* box. When you've finished, compare your answers with another student.



Over the period 1971 to 1997 as a whole, there was 1 ..... in the consumption of butter and margarine and a 2 ..... in the consumption of low-fat spreads. Butter was the most popular fat at the beginning of the period, and consumption 3 ..... of about 150 grams per person per week in about 1975. Since then, there has been 4 ..... . In 1981, the consumption of margarine 5 ..... that of butter for the first time, but since 1987 there has been 6 ..... in the consumption of margarine, which seems set to continue. Low-fat spreads were introduced 7 ..... and there has been 8 ..... in their consumption since then, so that by about 9 ..... they were more popular than either butter or margarine.

Name & Date:

Objective: IELTS Writing

**Useful language: Describing data**

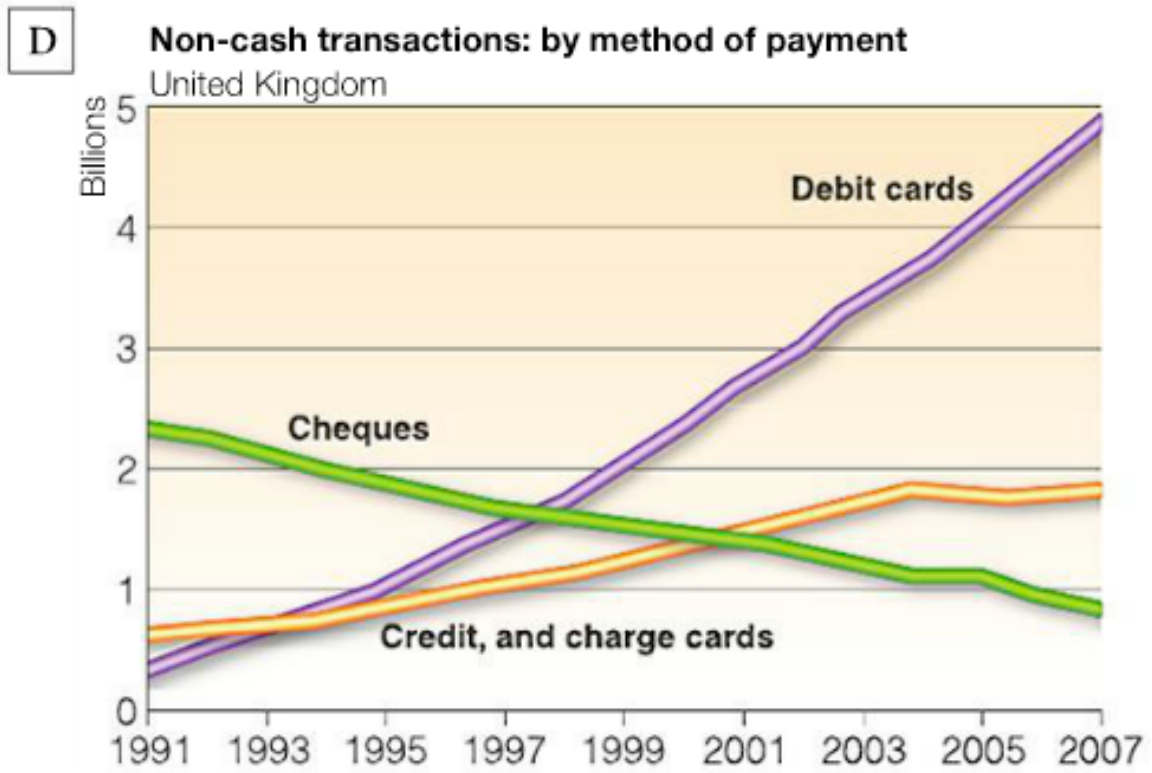
|    |                                                                                                                                                                                                                                                                                                                                                                                                                                                                                                                      |                                                                                                                                         |
|----|----------------------------------------------------------------------------------------------------------------------------------------------------------------------------------------------------------------------------------------------------------------------------------------------------------------------------------------------------------------------------------------------------------------------------------------------------------------------------------------------------------------------|-----------------------------------------------------------------------------------------------------------------------------------------|
|    | <p><b>Adjectives</b></p> <p>slight<br/>steady / gradual<br/>sharp / steep / rapid<br/>marked / significant</p>                                                                                                                                                                                                                                                                                                                                                                                                       | <p><b>Nouns</b></p> <p>increase / rise (in)<br/>decrease / decline /<br/>fall / (in)<br/>upward/downward<br/>trend (n)<br/>recovery</p> |
| a  |                                                                                                                                                                                                                                                                                                                                                                                                                                                                                                                      |                                                                                                                                         |
|    | <p><b>Verbs</b></p> <p>rise / increase<br/>fall / decline / decrease<br/>be at / reach a peak<br/>level out<br/>remain steady<br/>exceed</p>                                                                                                                                                                                                                                                                                                                                                                         | <p><b>Adverbs</b></p> <p>slightly / steadily /<br/>gradually<br/>sharply / steeply /<br/>significantly / rapidly</p>                    |
| to |                                                                                                                                                                                                                                                                                                                                                                                                                                                                                                                      |                                                                                                                                         |
|    | <p><b>Time expressions</b></p> <p>in 2000 / recent years, etc.<br/>since (point of time) July / 2000, etc.<br/>for (period of time) several months / ten years, etc.<br/>during /over the year / the period 1999 to 2009, etc.<br/>between May and December / 1999 and 2009, etc.</p> <p><i>House prices have fallen steadily since the beginning of 2008.</i><br/><i>Car sales reached a peak during the month of June.</i><br/><i>There was a slight increase in the cost of living between 2005 and 2007.</i></p> |                                                                                                                                         |

|          |  |          |  |
|----------|--|----------|--|
| <b>1</b> |  | <b>6</b> |  |
| <b>2</b> |  | <b>7</b> |  |
| <b>3</b> |  | <b>8</b> |  |
| <b>4</b> |  | <b>9</b> |  |
| <b>5</b> |  |          |  |

Name & Date:

Objective: IELTS Writing

Now write five sentences describing Graph D



|          |  |
|----------|--|
| <b>1</b> |  |
| <b>2</b> |  |
| <b>3</b> |  |
| <b>4</b> |  |
| <b>5</b> |  |